

The DL05 & DL06 Family of Products

The DL05 micro PLC family includes eight different models. Each has eight inputs and six outputs in the base unit. The DL05 has one option module slot, which can be used to expand the I/O count, provide additional communications capability or add a real-time clock and battery back-up. The larger DL06 micro PLC family has 20 inputs and 16 outputs in the base unit. The DL06 has four option module slots which can be used to add I/O or provide additional communications options.

Instruction sets

The DL05 CPU offers PID capability, high-speed counting, and most of the same powerful instruction set as our popular D2-250-1 CPU, including the IBox instructions available in *DirectSOFT* version 6. All DL05 PLCs have two built-in RS-232 communications ports that can be used for programming, operator interface, networking, etc.

The DL06 CPU offers PID capability, floating point number handling, and an instruction set very similar to our D2-260 CPU, including the IBox instructions available in *DirectSOFT* version 6. All DL06 PLCs have two built-in communications ports that can be used for programming, operator interface, networking, etc. One of the DL06 ports is a multi-function port capable of RS-232, RS-422, or RS-485 communications.

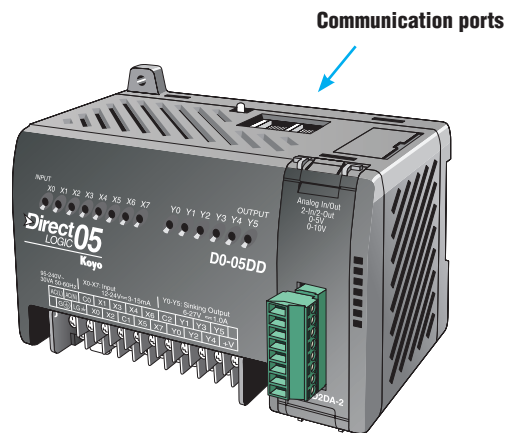
Power options

The DL05 and DL06 families have AC and DC power options. They are also offered with a variety of I/O options. You can explore the Quick Selection Guide on the next page to choose the right PLC for your application.

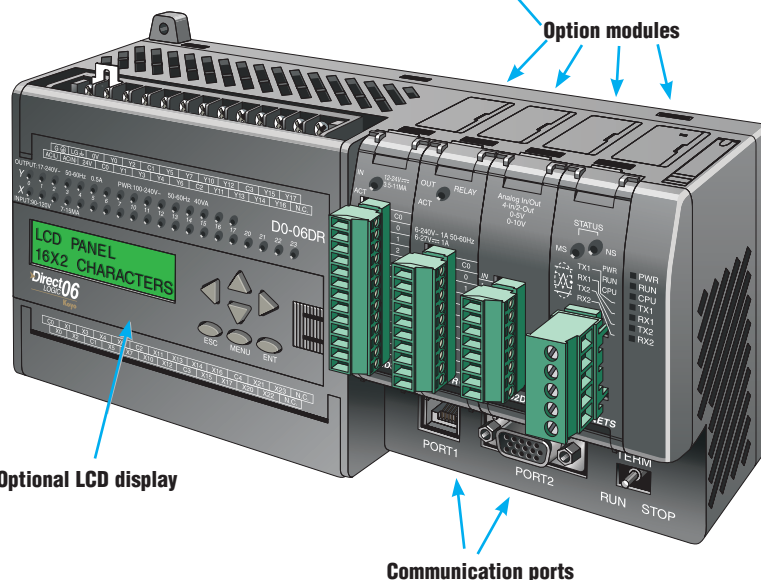
High-speed inputs and outputs

Units with DC inputs have selectable high-speed input features on three input points (DL05) or four input points (DL06). Units with DC outputs can use the first two outputs as a single bi-directional pulse output. An overview of the high-speed I/O features appear later in this section.

DL05
8 in/6 out



DL06
20 in/16 out



General Specifications	AC Powered	DC Powered
Power	100–240 VAC (+ 10%, -15%), 50–60 Hz	12/24 VDC
Input Voltage Range	95–240 VAC	12–24 VDC
Maximum Power	30VA (DL05) 40VA (DL06)	20W
Maximum Inrush Current	13A, 1ms (240VAC)	10A < 1ms
Storage Temperature	-4°F to 158°F (-20°C to 70°C)	
Ambient Operating Temperature	32°F to 131°F (0°C to 55°C)	
Ambient Humidity	5% - 95% relative humidity (non-condensing)	
Vibration Resistance	MIL STD 810C, Method 514.2	
Shock Resistance	MIL STD 810C, Method 516.2	
Noise Immunity	NEMA (ICS3-304)	
Atmosphere	No corrosive gases	

Quick Selection Guide

110/220 (+10%, -15%) VAC Power Options

DL05	DL06
<p>D0-05AA 8 AC inputs 6 AC outputs, 0.5 A/point</p> <p>D0-05AD 8 AC inputs 6 DC outputs (sinking), 1.0 A/point Two outputs can be used as a single bi-directional 7kHz pulse output</p> <p>D0-05AR 8 AC inputs 6 relay outputs, 2A/point</p> <p>D0-05DA 8 DC inputs Three inputs are filtered, or configure as a single 5kHz high-speed counter, interrupt input, or pulse catch input 6 AC outputs, 0.5 A/point</p> <p>D0-05DD 8 DC inputs Four inputs are filtered, or configure as a single 5kHz high-speed counter, interrupt input, or pulse catch input 6 DC outputs (sinking), 1.0 A/point Two outputs can be used as a single bi-directional 7kHz pulse output</p> <p>D0-05DR 8 DC inputs Four inputs are filtered inputs, can also be configured as a single 5kHz high-speed counter, interrupt input, or pulse catch input 6 relay outputs, 2A/point</p>	<p>D0-06AA 20 AC inputs 16 AC outputs, 0.5 A/point</p> <p>D0-06AR 20 AC inputs 16 relay outputs, 2A/point</p> <p>D0-06DA 20 DC inputs Four inputs are filtered inputs, can also be configured as a single 7kHz high-speed counter, interrupt input, or pulse catch input 16 AC outputs, 0.5 A/point</p>
	<p>D0-06DD1 20 DC inputs Four inputs are filtered inputs, can also be configured as a single 7kHz high-speed counter, interrupt input, or pulse catch input 16 DC outputs (sinking), 1.0 A/point* Two outputs can be used as a single bi-directional 10kHz pulse output</p> <p>D0-06DD2 20 DC inputs Four inputs are filtered inputs, can also be configured as a single 7kHz high-speed counter, interrupt input, or pulse catch input 16 DC outputs (sourcing), 1.0 A/point Two outputs can be used as a single bi-directional 10kHz pulse output</p> <p>D0-06DR 20 DC inputs Four inputs are filtered inputs, can also be configured as a single 7kHz high-speed counter, interrupt input, or pulse catch input 16 relay outputs, 2A/point</p>

12/24 VDC Power Options

DL05	DL06
<p>D0-05DD-D 8 DC inputs Three inputs are filtered inputs, can also be configured as a single 5kHz high-speed counter, interrupt input, or pulse catch input 6 DC outputs (sinking), 1.0 A/point Two outputs can be used as a single bi-directional 7kHz pulse output</p> <p>D0-05DR-D 8 DC inputs Three inputs are filtered inputs, can also be configured as a single 5kHz high-speed counter, interrupt input, or pulse catch input 6 Relay outputs, 2A/point</p>	<p>D0-06DD1-D 20 DC inputs Four inputs are filtered inputs, can also be configured as a single 7kHz high-speed counter, interrupt input, or pulse catch input 16 DC outputs (sinking), 1.0 A/point* Two outputs can be used as a single bi-directional 10kHz pulse output</p> <p>D0-06DR-D 20 DC inputs Four inputs are filtered inputs, can also be configured as a single 7kHz high-speed counter, interrupt input, or pulse catch input 16 relay outputs, 2A/point</p>
	<p>D0-06DD2-D 20 DC inputs Four inputs are filtered inputs, can also be configured as a single 7kHz high-speed counter, interrupt input, or pulse catch input 16 DC outputs (sourcing), 1.0 A/point Two outputs can be used as a single bi-directional 10kHz pulse output</p> <p><i>Note: High speed outputs cannot be used if high-speed inputs are in use, and high-speed inputs cannot be used if high-speed outputs are in use. Analog inputs and outputs can be accommodated with option modules, which are available for both the DL05 and DL06.</i></p> <p><i>* These outputs must be derated to 0.6 A for EN61131-2 compliance.</i></p>

Features at a Glance

The DL05 and DL06 micro PLCs are complete self-contained systems. The CPU, power supply, and I/O are all included inside the same housing. Option modules are available to expand the capability of each PLC family for more demanding applications. The standard features of these PLCs are extraordinary and compare favorably with larger and more expensive PLCs.

The specification tables to the right are meant for quick reference only. Detailed specifications and wiring information for each model of the DL05 and DL06 PLCs can be found in those specific sections.

Program capacity

Most boolean ladder instructions require a single word of program memory. Other instructions, such as timers, counters, etc., require two or more words. Data is stored in V-memory in 16-bit registers.

Performance

The performance characteristics shown in the tables represent the amount of time required to read the inputs, solve the Relay Ladder Logic program and update the outputs.

Instructions

A complete list of instructions is available at the end of this section.

Communications

The DL05 and DL06 offer powerful communication features normally found only on more expensive PLCs.

Special features

The DC input and DC output PLCs offer high-speed counting or pulse output. Option module slots allow for discrete I/O expansion, analog I/O, or additional communication options.

DL05 CPU Specifications

System capacity	
Total memory available (words)	6K
Ladder memory (words)	2,048
V-memory (words)	4,096
User V-memory	3,968
Non-volatile user V-memory	128
Battery backup	Yes ¹
Total built-in I/O	14
Inputs	8
Outputs	6
I/O expansion	Yes ¹

Performance	
Contact execution (Boolean)	0.7µs
Typical scan (1K Boolean) ²	1.5-3ms.

Instructions and diagnostics	
RLL ladder style	Yes
RLLPLUS/flowchart style (Stages)	Yes/256
Run-time editing	Yes
Supports Overrides	Yes
Scan	Variable/fixcd
Number of Instructions	133
Types of Instructions:	
Control relays	512
Timers	128
Counters	128
Immediate I/O	Yes
Subroutines	Yes
For/next loops	Yes
Timed interrupt	Yes
Integer math	Yes
Floating-point math	No
PID	Yes
Drum sequencers	Yes
Bit of word	Yes
ASCII print	Yes
Real-time clock/calendar	Yes ¹
Internal diagnostics	Yes
Password security	Yes
System and user error log	No

Communications	
Built-in ports	Two RS-232C
Protocols supported:	
K-sequence (proprietary protocol)	Yes
DirectNet master/slave	Yes
Modbus RTU master/slave	Yes
ASCII out	Yes
Baud rate	
Port 1	9,600 baud (fixed)
Port 2	selectable 300-38,400 baud (default 9,600)

Specialty Features	
Filtered inputs	Yes ³
Interrupt input	Yes ³
High speed counter	Yes, 5kHz ²
Pulse output	Yes, 7kHz ²
Pulse catch input	Yes ³

1- These features are available with use of certain option modules. Option module specifications are located later in this section.

2- Our 1K program includes contacts, coils, and scan overhead. If you compare our products to others, make sure you include their scan overhead.

3- Input features only available on units with DC inputs and output features only available on units with DC outputs.

DL06 CPU Specifications

System capacity	
Total memory available (words)	14.8K
Ladder memory (words)	7680
V-memory (words)	7616
User V-memory	7488
Non-volatile user V-memory	128
Built-in battery backup (D2-BAT-1)	Yes
Total I/O	36
Inputs	20
Outputs	16
I/O expansion	Yes ¹

Performance	
Contact execution (Boolean)	0.6µs
Typical scan (1K Boolean) ²	1-2ms.

Instructions and diagnostics	
RLL ladder style	Yes
RLLPLUS/flowchart style (Stages)	Yes/1024
Run-time editing	Yes
Supports Overrides	Yes
Scan	Variable/fixcd
Number of Instructions	229
Types of Instructions:	
Control relays	1024
Timers	256
Counters	128
Immediate I/O	Yes
Subroutines	Yes
For/next loops	Yes
Table functions	Yes
Timed interrupt	Yes
Integer math	Yes
Trigonometric functions	Yes
Floating-point math	Yes
PID	Yes
Drum sequencers	Yes
Bit of word	Yes
Number type conversion	Yes
ASCII in, out, print	Yes
LCD instruction	Yes
Real-time clock/calendar	Yes
Internal diagnostics	Yes
Password security	Yes
System and user error log	No

Communications	
Built-in ports:	One RS-232C One multi-function RS232C/RS422/RS485

NOTE: RS485 is for MODBUS RTU only.	
Protocols supported:	
K-sequence (proprietary protocol)	Yes
DirectNet master/slave	Yes
Modbus RTU master/slave	Yes
ASCII in/out	Yes
Baud rate	
Port 1	9,600 baud (fixed)
Port 2	selectable 300-38,400 baud (default 9,600)

Specialty Features	
Filtered inputs	Yes ³
Interrupt input	Yes ³
High speed counter	Yes, 7kHz ²
Pulse output	Yes, 10kHz ²
Pulse catch input	Yes ³

1- These features are available with use of certain option module. Option module specifications are located later in this section.

2- Our 1K program includes contacts, coils, and scan overhead. If you compare our products to others, make sure you include their scan overhead.

3- Input features only available on units with DC inputs and output features only available on units with DC outputs.

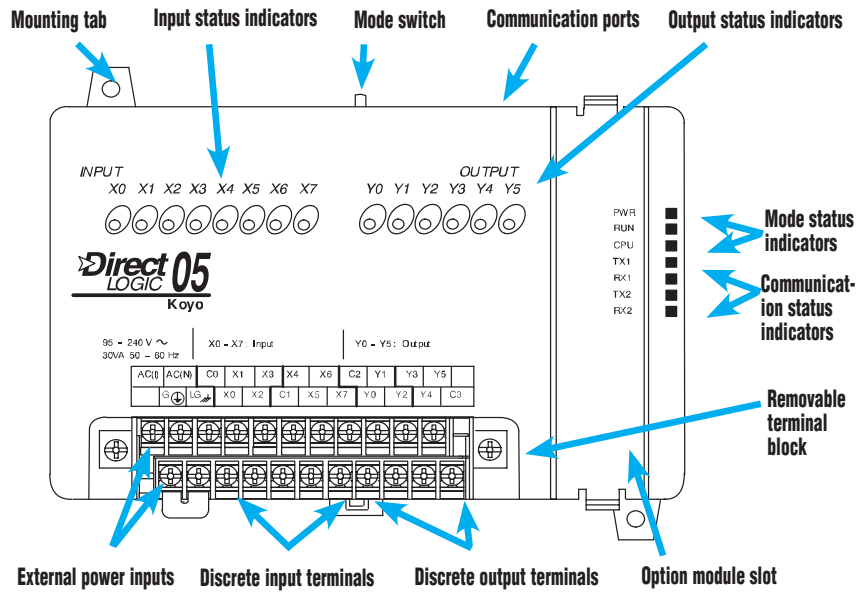
Features at a Glance

DirectSOFT software

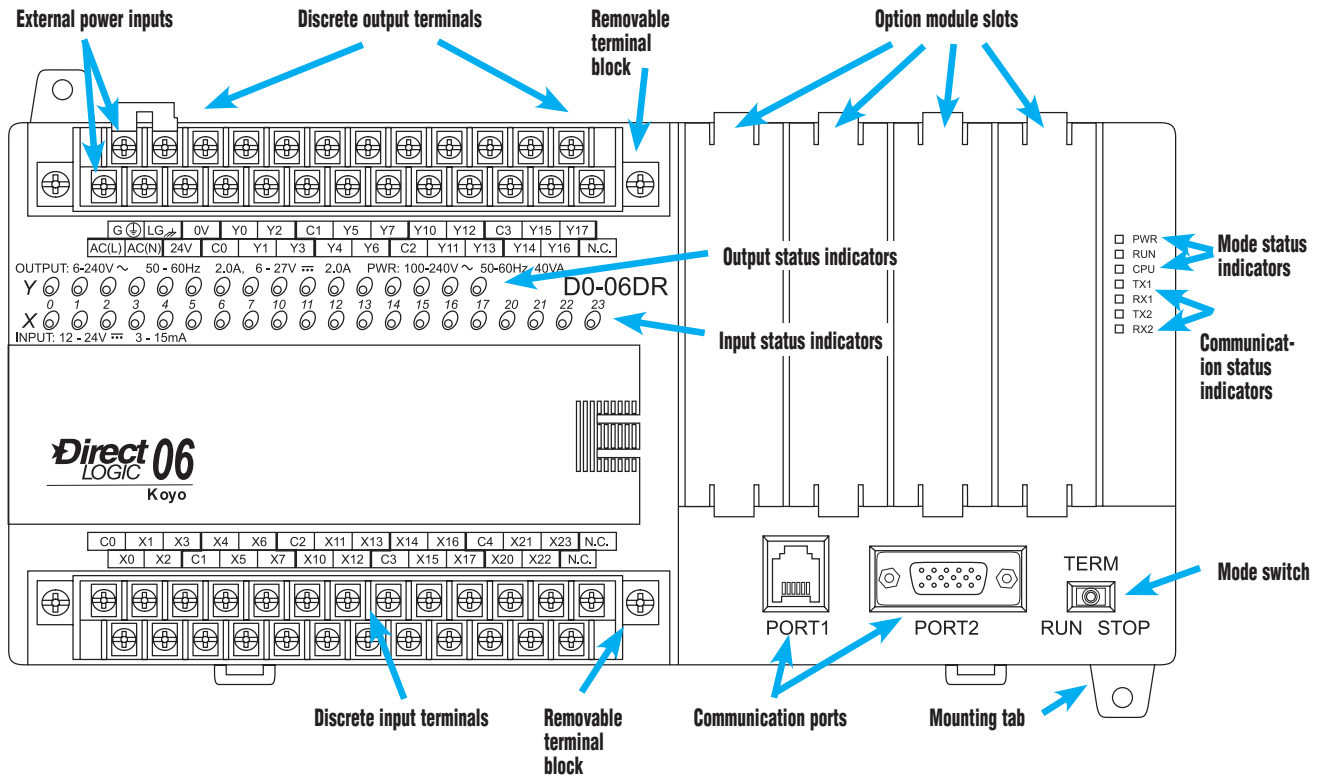
The DL05 and DL06 PLCs use the same familiar *DirectSOFT* programming software that our larger PLCs use. A FREE version of *DirectSOFT* gives you all the great features of the full version, but with a 100-word PLC program download limitation. For programs larger than 100 words, the full package is required. The FREE PC-DS100 software may be sufficient to program the DL05 and DL06. If you are programming with a full package version prior to v6.0, you will need v2.4 or later for the DL05 PLCs and v4.0 or later for the DL06. We always recommend the latest version for the most robust features. See the DirectLOGIC Overview section DL in this catalog for a complete description of *DirectSOFT* including features, part numbers of programming packages and upgrades.

Programming

Handheld programmer...D2-HPP	\$321.00
<i>DirectSOFT</i> Programming for Windows	
PC-DSOFT6	\$395.00
PC-DS100.....	Free
PC-R60-U (upgrade)	\$179.00



Hardware features diagrams

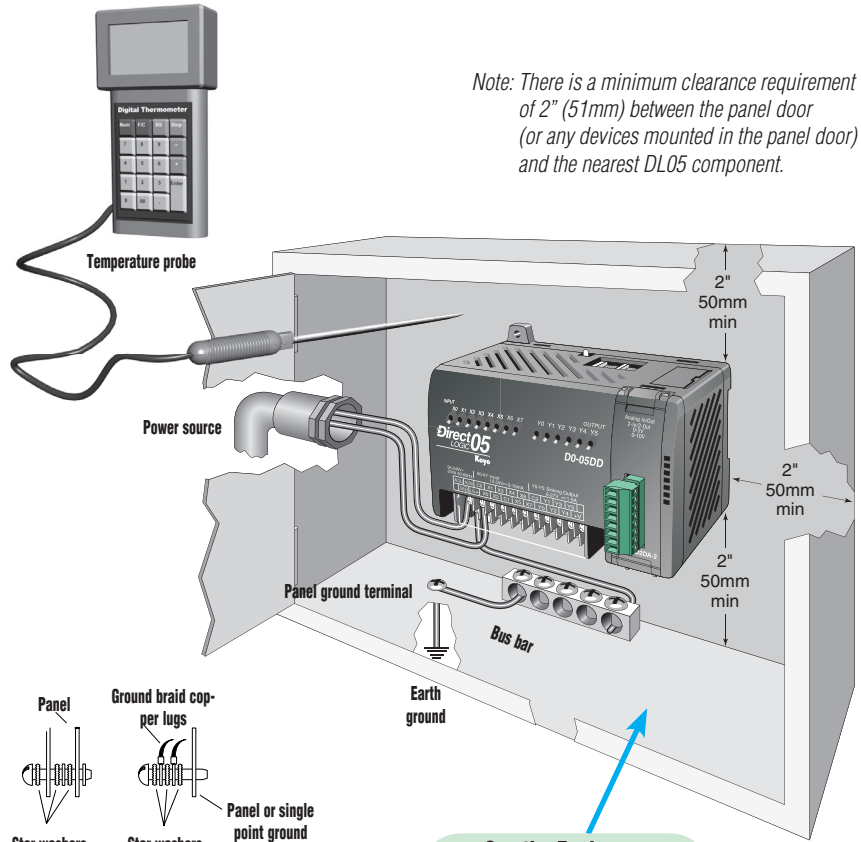


Product Dimensions and Installation

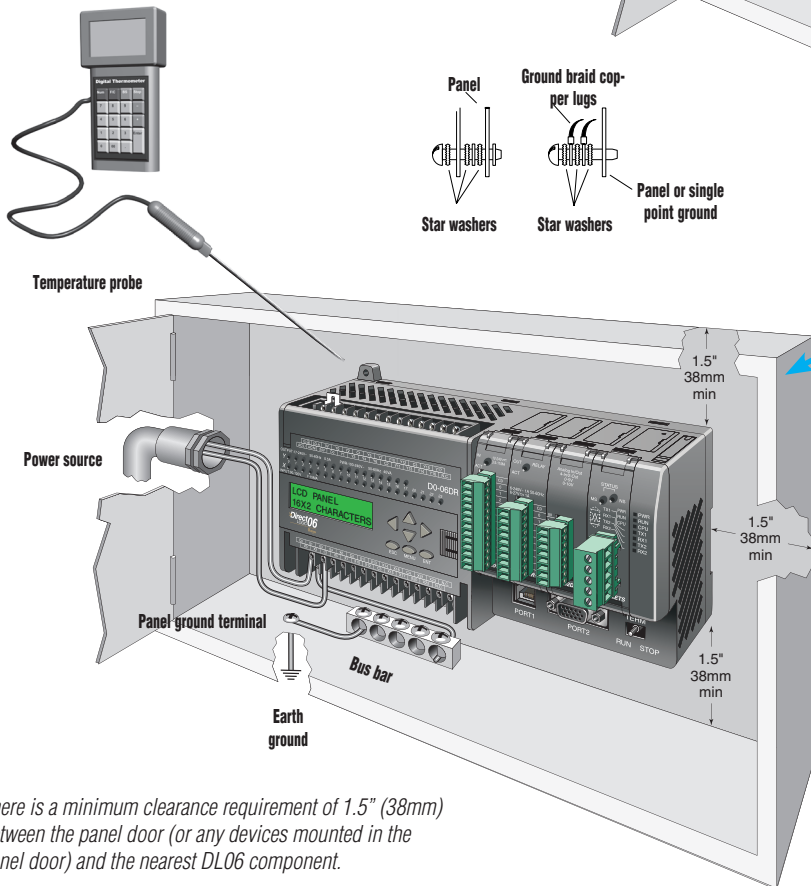
It is important to understand the installation requirements for your DL05 or DL06 system. Your knowledge of these requirements will help ensure that your system operates within its environmental and electrical limits.

Plan for safety

This catalog should never be used as a replacement for the user manual. You can purchase, download free, or view online the user manuals for these products. The D0-USER-M is the publication for the DL05 PLCs, and the D0-06USER-M is the publication for the DL06 PLCs. The D0-OPTIONS-M is the user manual for the option modules. These user manuals contain important safety information that must be followed. The system installation should comply with all appropriate electrical codes and standards.



Note: There is a minimum clearance requirement of 2" (51mm) between the panel door (or any devices mounted in the panel door) and the nearest DL05 component.



See the Enclosure section to find an enclosure that fits your application

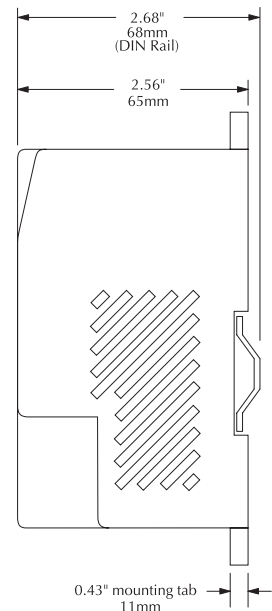
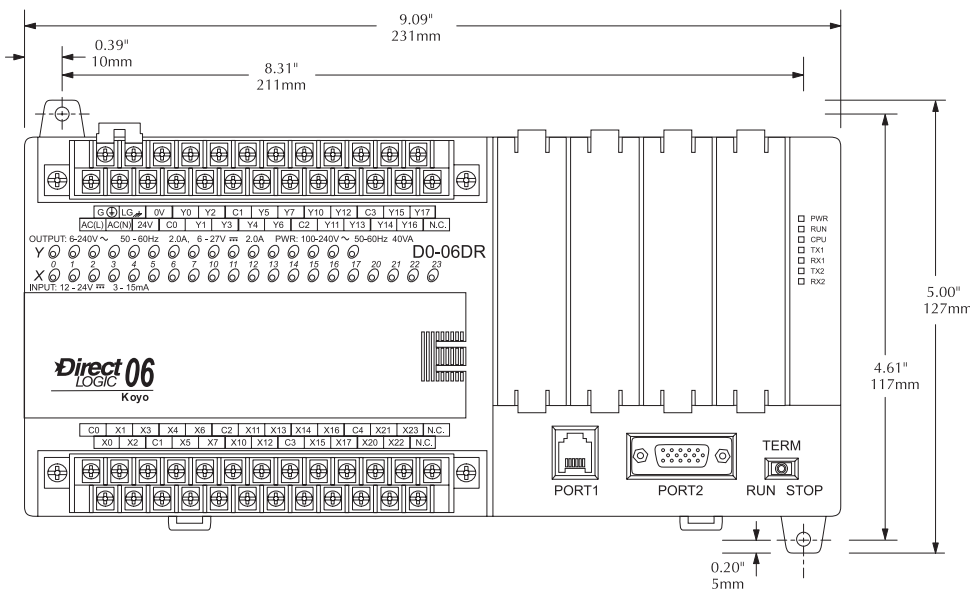
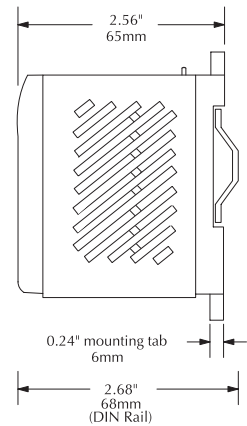
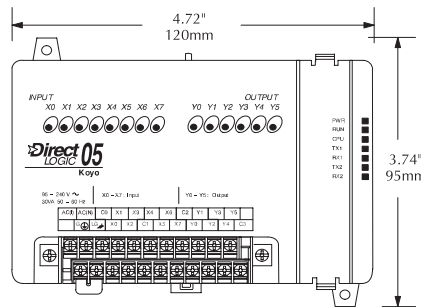
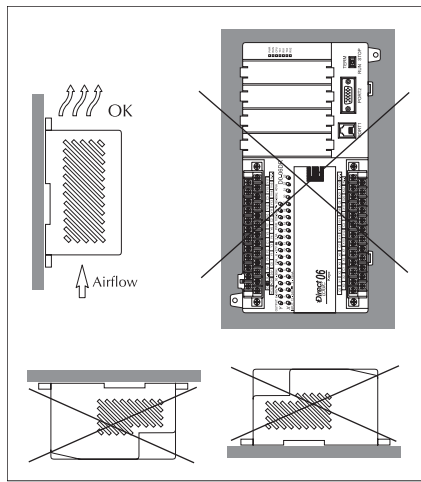
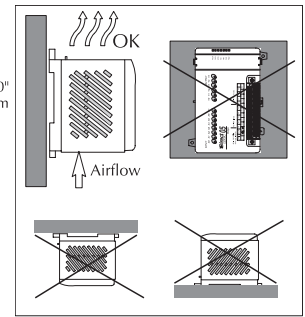
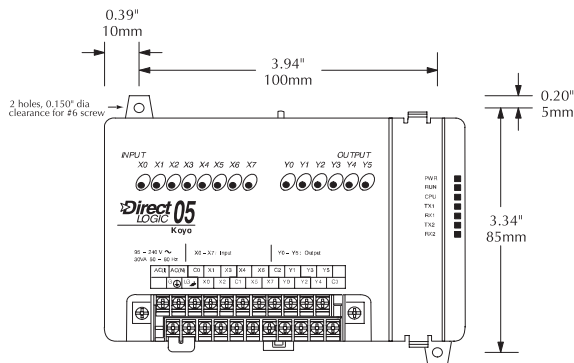
Note: There is a minimum clearance requirement of 1.5" (38mm) between the panel door (or any devices mounted in the panel door) and the nearest DL06 component.

Environmental Specifications for DL05 and DL06	
Storage Temperature	-4° F-158°F (-20°C to 70°C)
Ambient Operating Temperature	32°F-131°F (0° to 55°C)
Ambient Humidity	5 to 95% relative humidity (non-condensing)
Vibration Resistance	MIL STD 810C Method 514.2
Shock Resistance	MIL STD 810C Method 516.2
Noise Immunity	NEMA (ICS3-304)
Atmosphere	No corrosive gases

Product Dimensions and Installation

Unit dimensions and mounting orientation

DL05 and DL06 PLCs must be mounted properly to ensure ample airflow for cooling purposes. It is important to follow the unit orientation requirements and to verify that the PLC's dimensions are compatible with your application. Notice particularly the grounding requirements and the recommended cabinet clearances.



Choosing the I/O Type

The DL05 and DL06 product families offer a number of different I/O configurations. Choose the configuration that is right for your application. Also, keep in mind that both the DL05 and the DL06 PLCs offer the ability to add I/O with the use of option modules.

Fixed discrete I/O

All DL05 micro PLCs have eight built-in inputs and six built-in outputs on the base unit. The DL06 micro PLCs have 20 built-in inputs and 16 built-in outputs on the base unit. We offer the most common I/O types for your convenience, including AC inputs and outputs, DC sinking and sourcing inputs and outputs, and relay outputs. Refer to the tables to the right to see the I/O combinations available and their voltage ranges.

Option module slots

The DL05 has one option module slot and the DL06 has four option module slots. Check out the discrete and analog I/O you can add by purchasing inexpensive option modules. Specialty modules are also available and are discussed later in this section.

Automatically assigned addresses

The DL05 uses automatic addressing, so for the vast majority of applications, there is no setup required. We use octal addressing for these products, which means there are no 8s or 9s. The DL05's eight input points use addresses X0-X7, and the six output points use addresses Y0-Y5. Similarly, the DL06 uses addresses X0-X23 and Y0-Y17.

Review the I/O specs and wiring diagrams

The Base Unit I/O tables give a brief description of the I/O combinations offered for the DL05 and DL06 PLCs. The I/O specifications are discussed in more detail later in this section.

DL05 Base Unit I/O Table						
Part Number	Inputs			Outputs		
	I/O type/ commons	Sink or source	Voltage ranges	I/O type/ commons	Sink or source	Voltage/current ratings
DO-05AR	AC/2	N/A	90–120 VAC	Relay/2	N/A	6–27 VDC, 2A 6–240 VAC, 2A
DO-05DR	DC/2	Sink or Source	12–24 VDC	Relay/2	N/A	6–27 VDC, 2A 6–240 VAC, 2A
DO-05AD	AC/2	N/A	90–120 VAC	DC/1	Sink	6–27 VDC, 0.5 A (Y0-Y1) 6–27 VDC, 1.0 A (Y2-Y5)
DO-05DD	DC/2	Sink or Source	12–24 VDC	DC/1	Sink	6–27 VDC, 0.5 A (Y0-Y1) 6–27 VDC, 1.0 A (Y2-Y5)
DO-05AA	AC/2	N/A	90–120 VAC	AC/2	N/A	17–240 VAC 47–63 Hz 0.5 A
DO-05DA	DC/2	Sink or Source	12–24 VDC	AC/2	N/A	17–240 VAC 47–63 Hz 0.5 A
DO-05DR-D	DC/2	Sink or Source	12–24 VDC	Relay/2	N/A	6–27 VDC, 2A 6–240 VAC, 2A
DO-05DD-D	DC/2	Sink or Source	12–24 VDC	DC/1	Sink	6–27 VDC, 0.5 A (Y0-Y1) 6–27 VDC, 1.0 A (Y2-Y5)

Sinking/sourcing

If you are using a DC field device, you should consider whether that device requires a sinking or sourcing PLC I/O configuration. For more information on sinking and sourcing concepts, please refer to the Appendix of this catalog.

Sink/source inputs — All *built-in* DC inputs on the DL05 and DL06 micro PLCs can be wired in a sinking or sourcing configuration. However, all inputs on a single common must use the same configuration. In some cases, the DC inputs on option modules are fixed as sinking or sourcing. Refer to the table on the next page.

Sinking outputs — All *built-in* DC outputs on the DL05 are sinking. The DL06 family offers two PLCs with sinking DC outputs, and two with sourcing outputs.

Sourcing outputs — The DL06 PLC family includes the DO-06DD2(-D) with sourcing outputs. If a sourcing output is required, you might also consider using the DO-xxTD2 option module with sourcing outputs, which can also be installed in a DL05 or DL06 PLC.

High-speed inputs and pulse outputs

DL05s and DL06s with DC inputs offer high-speed input features, and DC output units offer pulse output features. The first three DC inputs on the DL05 PLCs are set up by default as filtered inputs with a 10 ms filter. Likewise, the first four DC inputs on the DL06 PLCs are set to the same default value. By entering a setup code in a special V-memory location, you can choose other features. In some modes of operation, you have a choice as to how you use each point. For example, if you use X0 as an up counter, you can use X2 as a reset input for the counter or as a filtered discrete input. If these features interest you, take a look at the detailed high-speed I/O descriptions found later in this section.

Choosing the I/O Type

DL06 Base Unit I/O Table						
Part Number	Inputs			Outputs		
	I/O Type/ Commons	Sink or source	Voltage Ranges	I/O Type/ Commons	Sink or Source	Voltage/Current Ratings
DO-06AA	AC/5	N/A	90–120 VAC	AC/4	N/A	17–240 VAC, 0.5 A 50/60 Hz
DO-06AR	AC/5	N/A	90–120 VAC	Relay/4	N/A	6–27 VDC, 2A 6–240 VAC, 2A
DO-06DA	DC/5	Sink or source	12–24 VDC	AC/4	N/A	17–240 VAC, 0.5 A 50–60 Hz
DO-06DD1	DC/5	Sink or source	12–24 VDC	DC/4	Sink	6–27 VDC, 0.5 A (Y0-Y1) 6–27 VDC, 1.0 A (Y2-Y17)*
DO-06DD2	DC/5	Sink or source	12–24 VDC	DC/4	Source	12–24 VDC, 0.5 A (Y0-Y1) 12–24 VDC, 1.0 A (Y2-Y17)
DO-06DR	DC/5	Sink or source	12–24 VDC	Relay/4	N/A	6–27 VDC, 2A 6–240 VAC, 2A
DO-06DD1-D	DC/5	Sink or source	12–24 VDC	DC/4	Sink	6–27 VDC, 0.5 A (Y0-Y1) 6–27 VDC, 1.0 A (Y2-Y17)*
DO-06DD2-D	DC/5	Sink or source	12–24 VDC	DC/4	Source	12–24 VDC, 0.5 A (Y0-Y1) 12–24 VDC, 1.0 A (Y2-Y17)
DO-06DR-D	DC/5	Sink or source	12–24 VDC	Relay/4	N/A	6–27 VDC, 2A 6–240 VAC, 2A

* These outputs must be derated to 0.6 A for EN61131-2 compliance.

Discrete I/O Option Modules						
Part Number	Inputs			Outputs		
	I/O Type/ Number/ Commons	Sink or source	Voltage Ranges	I/O Type/ Number/ Commons	Sink or Source	Voltage/Current Ratings
DO-07CDR	DC/4/1	Sink or source	12–24 VDC	Relay/3/1	N/A	6–27 VDC, 1A 6–240 VAC, 1A
DO-08CDD1	DC/4/2	Sink or source	12–24 VDC	DC/4/2	Sink	6–27 VDC, 0.3 A
DO-08TR	N/A	N/A	N/A	Relay/8/2	N/A	6–27 VDC, 1A 6–240 VAC, 1A
DO-10ND3	DC/10/2	Sink or source	12–24 VDC	N/A	N/A	N/A
DO-10ND3F	DC/10/2	Sink or source	12–24 VDC	N/A	N/A	N/A
DO-10TD1	N/A	N/A	N/A	DC/10/2	Sink	6–27 VDC, 0.3 A
DO-10TD2	N/A	N/A	N/A	DC/10/2	Source	12–24 VDC, 0.3 A
DO-16ND3	DC/16/4	Sink or source	20–28 VDC	N/A	N/A	N/A
DO-16TD1	N/A	N/A	N/A	DC/16/2	Sink	6–27 VDC, 0.1A
DO-16TD2	N/A	N/A	N/A	DC/16/2	Source	12–24 VDC, 0.1A
FO-04TRS	N/A	N/A	N/A	Relay/4/4	N/A	5–30 VDC, 3A 5–125 VAC, 3A
FO-08NA-1	AC/8/2	N/A	80–132 VAC 90–150 VDC	N/A	N/A	N/A
FO-08SIM	8-pt. Input simulator					

Communications and Specialty Option Modules		
Part Number	Description	
HO-ECOM100	Ethernet Communications Module 10/100 Mbit	
DO-DEVNETS	DeviceNET Slave Module	
HO-CTRIO	High Speed Counter I/O Module	Retired
HO-CTRIO2		Retired
HO-PSCM	Profibus Slave Communications Module	
DO-DCM	Serial Communications Module	
FO-CP128	ASCII CoProcessor Module	

Analog I/O

By using option modules, you can add analog inputs or outputs to your DL05 or DL06 PLC. The table below shows the input and output types at a glance. Detailed specifications are provided later in this section.

Analog I/O Option Modules				
Part Number	Inputs		Outputs	
	No.	Input Type	No.	Output Type
FO-04AD-1	4	0-20 mA or 4-20 mA	0	N/A
FO-04AD-2	4	0-5 VDC or 0-10 VDC	0	N/A
FO-08ADH-1	8	0-20 mA	0	N/A
FO-08ADH-2	8	0-5 VDC or 0-10 VDC	0	N/A
FO-04DAH-1	0	N/A	4	4-20 mA
FO-08DAH-1	0	N/A	8	4-20 mA
FO-04DAH-2	0	N/A	4	0-10 VDC
FO-08DAH-2	0	N/A	8	0-10 VDC
FO-4AD2DA-1	4	0-20 mA or 4-20 mA	2	0-20 mA or 4-20 mA
FO-2AD2DA-2	2	0-5 VDC or 0-10 VDC	2	0-5 VDC or 0-10 VDC
FO-4AD2DA-2	4	0-5 VDC or 0-10 VDC	2	0-5 VDC or 0-10 VDC
FO-04RTD	4	RTD	0	N/A
FO-04THM*	4	Thermocouple / Voltage	0	N/A

* See module specifications page for thermocouple types and voltage input ranges supported

Power budgeting

No power budgeting is necessary for the DL05. The built-in power supply is sufficient for powering the base unit, any of the option modules, the handheld programmer, and even a DV1000 operator interface.

Power budgeting is necessary for the DL06. With four option module slots and an optional LCD display, it is necessary to verify that sufficient power is available for all optional devices. Power budgeting is described in detail on page 2-29 and in the DL06 User Manual.

Networking the DL05 and DL06

All DL05 and DL06 PLCs have built-in networking capability. The DL05 family offers two 6-pin, RS-232 ports. You can use these ports for programming, networking, or connecting an operator interface device. The RS-232 ports support point-to-point communications using the optional D0-CBL cable. If you need to create a multi-drop network or require longer distances between devices, you can use the FA-ISOCOCON at each DL05 to convert the RS-232 signal to RS-422 or RS-485.

The DL06 family of PLCs offers even greater communications flexibility. Port 1 is a fixed baud rate port identical to port 1 on the DL05 PLCs, but port 2 is a multi-function port that can be used as RS-232, RS-422, or RS-485 (Modbus/ASCII only) without using external converters. This allows you to create multi-drop networks with minimal installation headaches.

Protocols supported

Each port is capable of communicating using K-sequence, *Direct*NET and Modbus RTU protocols. Port 1 can only be a slave for each of the protocols. Port 2 can serve as a K-sequence slave or a network master or slave for either *Direct*NET or Modbus RTU protocols.

Serial Bus Protocols

We also offer option modules that allow you to connect a DL05 or DL06 PLC to a variety of networks as a slave device. Our D0-DEVNETS (DeviceNet) and H0-PSCM (PROFIBUS) option modules plug into any DL05 or DL06 PLC. The D0-DCM Data Communications module supports *Direct*NET and Modbus RTU protocols.

ZIPLink communication adapter modules

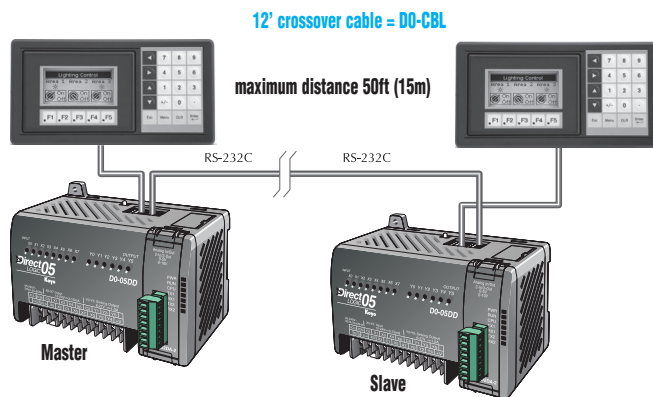
The ZIPLink communications adapter modules offer fast and convenient screw terminal connection for the bottom port of the DL06 CPU. The adapter modules are RS232/422 DIP switch selectable and are offered with or without indicating LEDs and surge protection. See the Wiring Solutions section in this catalog for more information.

Optional Ethernet communication modules

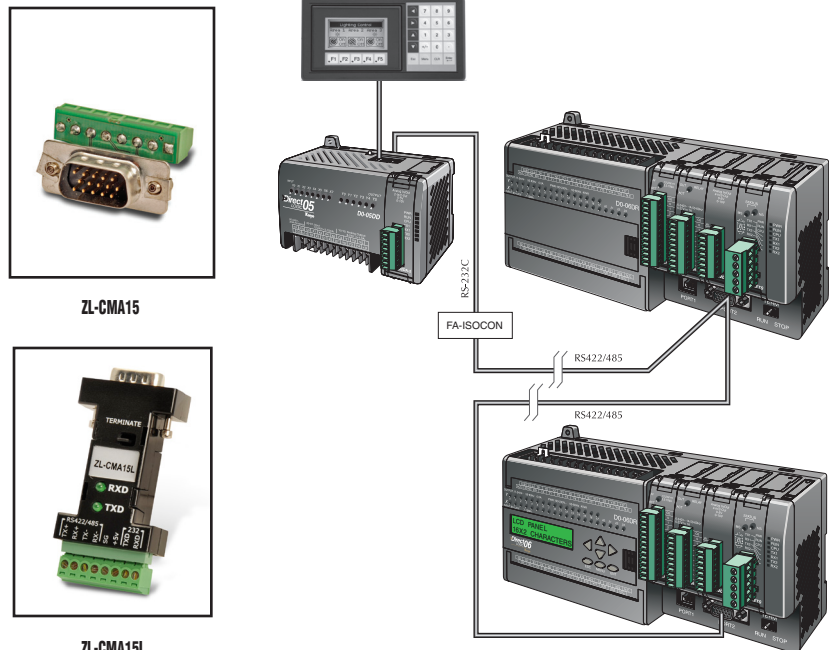
Need to connect to a high speed HMI or computer system? We offer a 100Base-T Ethernet communications module. You can use the H0-ECOM100 Ethernet communication module with our Stride

Ethernet switches or with most off-the-shelf Ethernet hubs or switches. The H0-ECOM100 option module plugs into any DL05 or DL06 PLC and supports the industry standard Modbus TCP protocol.

Point-to-point



Multi-drop



Maximum distance of 3,300 ft. (1000m)

ZL-CMA15

ZL-CMA15L

Ports, Status Indicators, and Modes

Port 1

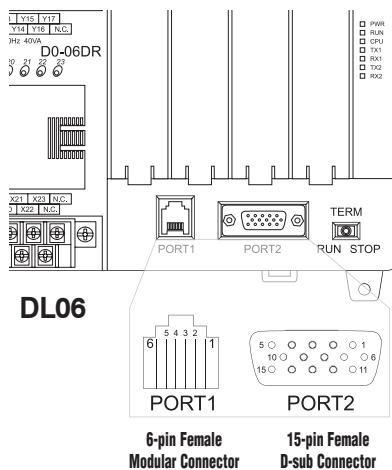
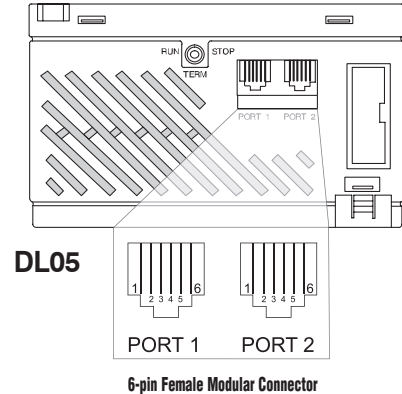
Port 1 is a 6-pin, fixed configuration port and has the same pin assignments on the DL05 and the DL06. Please refer to the table and diagrams on this page. This port can be used to connect to an HPP, *DirectSOFT*, an operator interface, or other external device. Features include:

- 9600 baud
- 8 data bits
- Odd parity
- 1 start bit, 1 stop bit
- Station address of 1
- Asynchronous, half-duplex, DTE

Protocols supported (as slave):

- K sequence, *DirectNET*, Modbus RTU

DL05 & DL06 Port 1 Pin Descriptions		
1	0V	Power (-) connection (GND)
2	5V	Power (+) connection
3	RXD	Receive data (RS-232C)
4	TXD	Transmit data (RS-232C)
5	5V	Power (+) connection
6	0V	Power (-) connection (GND)



Port 2

Port 2 is a configurable port on both the DL05 and the DL06 PLCs. The DL05 PLC uses a 6-pin modular connector and offers RS-232 communications only. The DL06 PLC uses a 15-pin HD-sub connector and offers RS-232, RS-422, or RS-485 communications. Please refer to the table and diagrams on this page for more information. This port can be used to connect to an HPP, *DirectSOFT*, an operator interface, or other external device. Features of port 2 include:

- 300, 600, 1200, 2400, 4800, 9600 (default), 19,200, 38,400 baud
- 8 data bits
- Odd (default), even, or no parity
- 1 start bit, 1 stop bit
- Station address:
 - 1 (default)
 - 1-90 *DirectNET*, K sequence
 - 1-247 Modbus RTU
- Asynchronous, half-duplex, DTE

Protocols supported:

- K sequence (slave), *DirectNET* (master/slave), Modbus (master/slave)

DL05 Port 2 Pin Descriptions		
1	0V	Power (-) connection (GND)
2	5V	Power (+) connection
3	RXD	Receive data (RS-232C)
4	TXD	Transmit data (RS-232C)
5	RTS	Ready to send
6	0V	Power (-) connection (GND)

DL06 Port 2 Pin Descriptions		
1	5V	Power (+) connection
2	TXD	Transmit data (RS-232C)
3	RXD	Receive data (RS-232C)
4	RTS	Ready to send (RS232C)
5	CTS	Clear to send (RS232C)
6	RXD-	Receive data (-) (RS-422/485)
7	0V	Power (-) connection (GND)
8	0V	Power (-) connection (GND)
9	TXD+	Transmit data (+) (RS-422/485)
10	TXD-	Transmit data (-) (RS-422/485)
11	RTS+	Ready to send (+) (RS-422/485)
12	RTS-	Ready to send (-) (RS-422/485)
13	RXD+	Receive data (+) (RS-422/485)
14	CTS+	Clear to send (+) (RS-422/485)
15	CTS-	Clear to send (-) (RS-422/485)

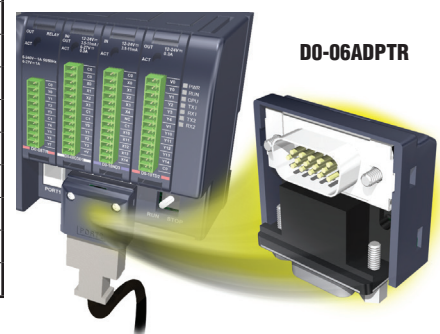
DL05 and DL06 status indicators

Status Indicators		
Indicator	Status	Meaning
PWR	ON	Power good
	OFF	Power failure
RUN	ON	CPU is in Run Mode
	OFF	CPU is in Stop or Program Mode
CPU	ON	CPU self diagnostics error
	OFF	CPU self diagnostics good
TX1	ON	Data is being transmitted by the CPU-Port 1
	OFF	No data is being transmitted by the CPU-Port 1
RX1	ON	Data is being received by the CPU-Port 1
	OFF	No data is being received by the CPU-Port 1
TX2	ON	Data is being transmitted by the CPU-Port 2
	OFF	No data is being transmitted by the CPU-Port 2
RX2	ON	Data is being received by the CPU-Port 2
	OFF	No data is being received by the CPU-Port 2

DL05 and DL06 mode switches

Mode Switch Position	CPU Action
RUN (Run Program)	CPU is forced into the RUN mode if no errors are encountered. No program changes are allowed by the programming/monitoring device.
TERM (Terminal)	RUN PROGRAM and the TEST modes are available. Mode and program changes are allowed by the programming/monitoring device.
STOP	CPU is forced into the STOP mode. No changes are allowed by the programming/monitoring device.

Use the optional low profile 15-pin adapter to make option module wiring easier.



ASCII and Modbus Instructions

ASCII instructions for DL06

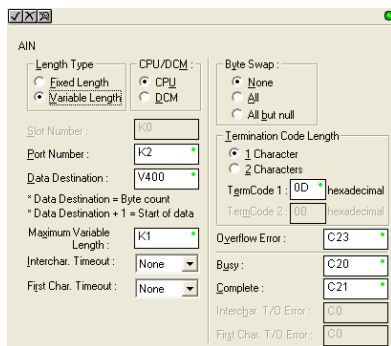
The DL06 PLC supports several easy-to-use instructions, which allow ASCII strings to be read into or written from the communication ports when using either the CPU port 2, or the D0-DCM Data Communications Module port 2.

Raw ASCII: CPU/DCM Port 2 can be used for either reading or writing raw ASCII strings, but not for both.

Embedded ASCII: With these instructions, you can use the DL06 PLC to locate ASCII strings embedded within a supported protocol via CPU/DCM Port.

Receiving ASCII strings

1. ASCII IN (AIN) - This instruction configures CPU/DCM Port 2 for raw ASCII input strings, with parameters such as fixed and variable length ASCII strings, termination characters, byte swapping options, and instruction control bits. Use barcode scanners, weigh scales, etc., to write raw ASCII input strings into CPU/DCM Port 2 based on the AIN instruction's parameters.

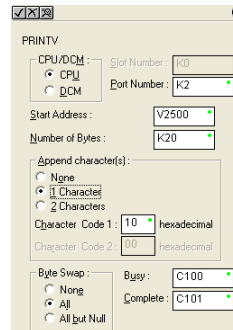


2. Write embedded ASCII strings directly to V-memory from an external HMI (or similar master device). The ASCII string is transmitted through CPU/DCM Port 2 using any supported communications protocol. This method uses the familiar RX/WX instructions previously available.

3. If the DL06 is used as a network master, the Network Read instruction (RX) can be used to read embedded ASCII data from a network slave device. Again, the ASCII string would be transmitted through CPU/DCM Port 2, using any supported communications protocol.

Writing ASCII strings

1. Print from V-memory (PRINTV) - Use this instruction to write raw ASCII strings out of CPU/DCM port 2 to a display panel, serial printer, etc.



The instruction features the starting V-memory address, string length, byte swapping options, etc. When the instruction's permissive bit is enabled, the string is written to CPU/DCM Port 2.

2. Print to V-memory (VPRINT) - Use this instruction to create pre-coded ASCII strings in the PLC (e.g. alarm messages). When the instruction's permissive bit is enabled, the message is loaded into a pre-defined V-memory address location. Then the PRINTV instruction may be used to write the pre-coded ASCII string out of CPU/DCM Port 2. American, European, and Asian Time/Dates tamps are supported.

3. Print Message (PRINT) - This existing instruction can be used to create pre-coded ASCII strings in the PLC. When the instruction's permissive bit is enabled, the string is written to CPU/DCM Port 2. The VPRINT/PRINTV instruction combination is more powerful and flexible than the PRINT instruction.

4. If the DL06 PLC is a network master, the Network Write (WX) can be used to write embedded ASCII data to an HMI or slave device directly from V-memory. This is done via a supported communications protocol using CPU/DCM Port 2.

More ASCII instructions

ASCII Find (AFIND) - Finds where a specific portion of the ASCII string is located in continuous V-memory addresses.

ASCII Extract (AEX) - Extracts a specific portion (usually some data value) from the ASCII find location or other known ASCII data location.

Compare V-memory (CMPV) - This instruction is used to compare two blocks of V-memory addresses and is usually used to detect a change in an ASCII string. Compared data types must be of the same format (e.g. BCD, ASCII, etc.).

Swap Bytes (SWAPB) - Swaps V-memory bytes on ASCII data that was written directly to V-memory from an external HMI or similar master device via a communications protocol. The AIN and AEX instructions have a built-in byte swap feature.

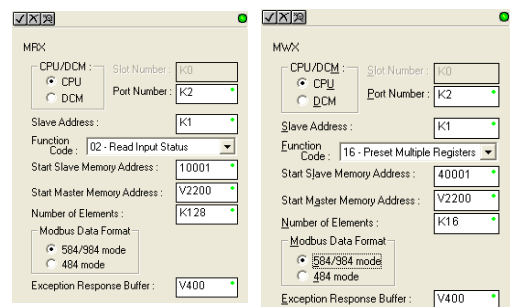
The F0-CP128 option module is also available for more extensive ASCII communications.

Modbus RTU instructions for DL06

The DL06 CPU/DCM port 2 supports Modbus Read/Write instructions that simplify setup. The MRX and MWX instructions allow you to use native Modbus addressing, eliminating the need for octal to decimal conversions.

Function Codes 05 and 06 and the ability to read Slave Exception Codes have been added. These flexible instructions allow the user to select the following parameters within one instruction window:

- 584/984 or 484 Modbus data type
- Slave node (0-247)
- Function code
- Starting master/slave memory address
- Number of bits
- Exception code starting address



Power Budgeting for the DL06

The DL06 has four option module slots. To determine whether the combination of modules you select will have sufficient power, you will need to perform a power budget calculation.

Power supplied

Power is supplied from two sources: the internal base unit power supply and, if required, an external supply (customer furnished). The D0-06xx (AC powered) PLCs supply a limited amount of 24VDC power. The 24VDC output can be used to power external devices.

For power budgeting, start by considering the power supplied by the base unit. All DL06 PLCs supply the same amount of 5VDC power. Only the AC units offer 24VDC auxiliary power.

Be aware of the trade-off between 5VDC power and 24VDC power. The amount of 5 VDC power available depends on the amount of 24VDC power being used, and the amount of 24VDC power available depends on the amount of 5VDC power consumed. Determine the amount of internally supplied power from the table to the right.

Power required by base unit

Because of the different I/O configurations available in the DL06 family, the power consumed by the base unit itself varies from model to model. Subtract the amount of power required by the base unit from the amount of power supplied by the base unit. Be sure to subtract 5VDC and 24VDC amounts.

Power required by option modules

Next, subtract the amount of power required by the option modules you are planning to use. Again, remember to subtract both 5VDC and 24VDC.

If your power budget analysis shows surplus power available, you should have a workable configuration.

DL06 Power Supplied by Base Units		
Part Number	5 VDC (mA)	24 VDC (mA)
D0-06xx	1500mA	300mA
	2000mA	200mA
D0-06xx-D	1500mA	none

DL06 Base Unit Power Required		
Part Number	5 VDC (mA)	24 VDC (mA)
D0-06AA	800mA	none
D0-06AR	900mA	none
D0-06DA	800mA	none
D0-06DD1	600mA	280mA*
D0-06DD2	600mA	none
D0-06DR	950mA	none
D0-06DD1-D	600mA	none
D0-06DD2-D	600mA	none
D0-06DR-D	950mA	none

* Only if auxiliary 24VDC power is connected to V+ terminal.

DL06 Power Consumed by Other Devices		
Part Number	5 VDC (mA)	24 VDC (mA)
D0-06LCD	50mA	none
D2-HPP	200mA	none
DV-1000	150mA	none
C-more Micro-Graphic	210mA	none

Power Budgeting Example			
Power Source		5VDC power (mA)	24VDC power (mA)
D0-06DD1 (select row A or B)	A	1500mA	300mA
	B	2000mA	200mA
Current Required		5VDC power (mA)	24VDC power (mA)
		D0-06DD1	600mA
		D0-16ND3	35mA
		D0-10TD1	150mA
		D0-08TR	280mA
		F0-4AD2DA-1	100mA
		D0-06LCD	50mA
		Total Used	1215mA
			280mA
Remaining	A	285mA	20mA
	B	785mA	note 1

* Auxiliary 24 VDC used to power V+ terminal of D0-06DD1 sinking outputs.

Note 1: If the PLC's auxiliary 24 VDC power source is used to power the sinking outputs, use power choice A, above.

DL05/06 Power Consumed by Option Modules		
Part Number	5 VDC (mA)	24 VDC (mA)
D0-07CDR	130mA	none
D0-08CDD1	100mA	none
D0-08TR	280mA	none
D0-10ND3	35mA	none
D0-10ND3F	35mA	none
D0-10TD1	150mA	none
D0-10TD2	150mA	none
D0-16ND3	35mA	none
D0-16TD1	200mA	none
D0-16TD2	200mA	none
F0-04TRS	250mA	none
F0-08NA-1	5mA	none
F0-04AD-1	50mA	none
F0-04AD-2	75mA	none
F0-08ADH-1	25mA	25mA
F0-08ADH-2	25mA	25mA
F0-04DAH-1	25mA	150mA
F0-08DAH-1	25mA	220mA
F0-04DAH-2	25mA	30mA
F0-08DAH-2	25mA	30mA
F0-2AD2DA-2	50mA	30mA
F0-4AD2DA-1	100mA	40mA
F0-4AD2DA-2	100mA	none
F0-04RTD	70mA	none
F0-04THM	30mA	none
D0-DEVNETS	45mA	none
H0-PSCM	530mA	none
H0-CTRIO2	250mA	none
H0-ECOM100	300mA	none
F0-08SIM	1mA	none
D0-DCM	250 mA	none
F0-CP128	150 mA	none
F0-08SIM	1 mA	none

DL06 LCD Display

The optional D0-06LCD (\$83.00) is a cost effective LCD display panel that is easy to install. This device is available exclusively for the DL06 PLCs.

16 X 2 backlit display

The 16 character x 2 row display mounts directly on the face of the PLC. The LCD is backlit and is accessible using the seven function keys on the front of the display.

Monitor or change data values

You can view V-memory registers, I/O status, PLC mode, or system errors without interrupting the PLC's control function.

Display messages required for alarm or monitoring purposes can be preprogrammed or imported as ASCII data.

Password protection

Two layers of password protection prevent unauthorized changes to clock and calendar setup and V-memory data values. Individuals with password authorization can change clock, calendar, V-memory values, force bits on or off, etc.

One simple ladder instruction is used to set up the display. The LCD configuration instruction is available in *DirectSOFT*, version 4.0 or later.

Note: The D2-HPP handheld programmer does not support DL06 LCD configuration.

The DL06 User Manual (D0-06USER-M) describes more fully the installation and operation of the D0-06LCD. Be sure to consult this manual before installing the DL06 LCD. The manual is available free on our Web site, or it can be purchased separately.

Snap-in installation

The display installs easily into any model DL06 PLC.

Note: Remove power to the PLC before installing or removing the LCD display.

Remove the plastic cover (located between the input and output terminals) by sliding the cover to the left. In its place, slide in the LCD display until it snaps into place.

Display or change individual bits (up to 16 bits per screen) or 32-bit double word values from V-memory.

Buzzer

The piezoelectric buzzer can be configured to provide pushbutton feedback.

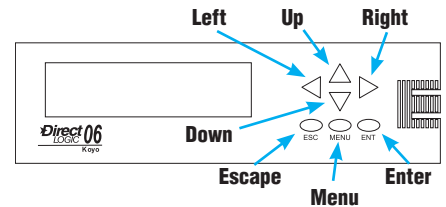
Keypad navigation

Seven function keys on the face of the LCD display provide navigation through messages or menu items. Messages fall into two categories:

- Error messages
- User-defined preprogrammed messages

At power-up the default screen is displayed. The default screen can be user-defined.

Seven menu choices allow you to view or change all accessible data values (see next page).



DL06 LCD Display

Menu choices

Pressing the Menu key takes you to the last accessed menu (or the first menu selection, if you haven't previously accessed a menu). Each time you press the Menu key (or if you simply hold the menu key down) the display will step through all menu choices.

There are seven built-in menus. Use the Menu key to locate the menu you need, and press the Enter key to view or change values.

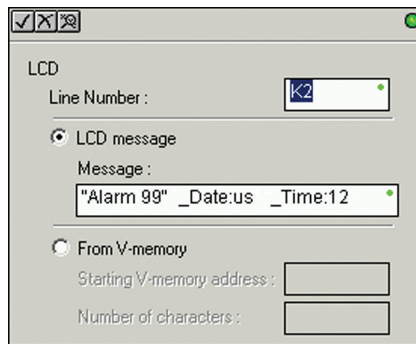
From the default screen or a message screen, press and hold the Menu key. The display will scroll through the following choices:

- M1 : PLC information
- M2 : System configuration
- M3 : Monitor
- M4 : Calendar R/W
- M5 : Password operation
- M6 : Error history read
- M7 : LCD test and set

Make a menu selection by pressing the Enter key. Change data values using the direction arrow keys.

Ladder instruction

The LCD instruction in *DirectSOFT* gives the PLC programmer a convenient way to define screen messages. A literal string can be programmed using the LCD instruction. Embedding variables allows you to customize the messages for an application that involves changing values. The following example shows an embedded date and time on an alarm message:

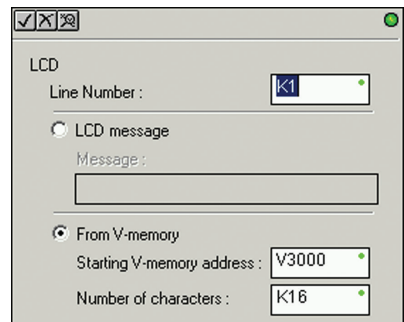


Message with embedded date and time

The top line (16 characters) is designated K1, and the second line is K2. The sample instructions on this page show how a message is developed. A permissive contact turns on the instruction block, which sends the message to the display.

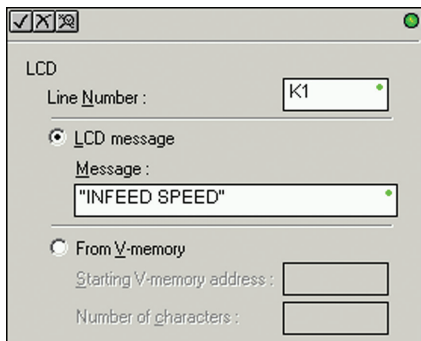
Messages can also be retrieved from V-memory and sent to the display. Select K1 or K2 to indicate which line you want to write to and select "From V-memory" as the source of the string.

Up to 16 characters of ASCII text can be displayed per line. In the example, K16 indicates that 16 bytes (8 words) of ASCII text is retrieved for display.

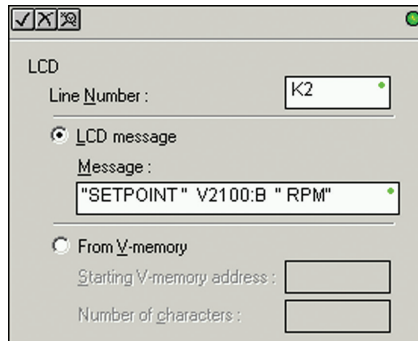


Message from PLC memory

Message programming examples



Simple text message

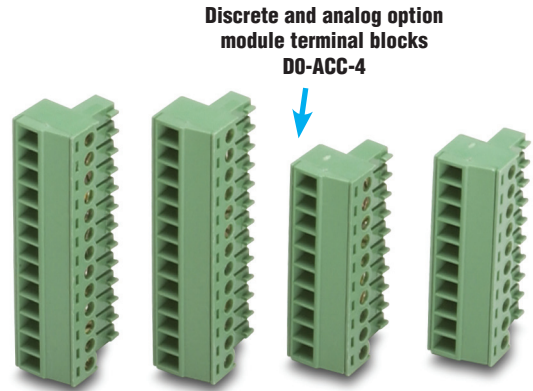


Message with embedded data



Accessories

DL05, DL06 and Option Module Accessories		
Part Number	Description	Price
D0-MC-BAT	Replacement battery for Do-more H2 and T1H series CPU modules, and D0-01MC optional memory cartridge for the DL05 PLCs.	\$3.00
D2-BAT-1	Replacement RAM retentive memory backup battery for the DL06.	\$13.00
F0-IOCON	DL05 or DL06 replacement terminal blocks, 8-position, for the F0-04AD-1, F0-04AD-2, F0-2AD2DA-2, F0-4AD2DA-1, F0-4AD2DA-2 and H0-CRIO2 option modules (qty. 2).	\$14.00
F0-IOCON-THM	DL05 or DL06 thermocouple option module replacement terminal block, quantity one.	\$14.00
D0-CBL	12ft. (3.66 m) RS-232C shielded networking cable without RTS connections for DL05 or DL06 RJ12 networking ports. Enables direct networking of two PLCs.	\$19.00
D0-ACC-1	DL05 accessory pack includes one each of the I/O terminal block, I/O terminal block cover, and option slot cover.	\$13.00
D0-ACC-2	DL06 replacement terminal blocks (qty. 2), terminal block covers (qty. 2), terminal block labels (qty. 2) and short bar (qty. 1).	\$30.00
D0-ACC-3	DL06 replacement option module slot covers (qty. 4), DL06 top covers (qty. 4), LCD slot cover, and lower access panel cover.	\$13.00
D0-ACC-4	DL05 or DL06 discrete I/O option module replacement terminal blocks, includes 13-position (qty. 2) and 10-position (qty. 2).	\$19.00
D0-06ADPTR	DL06 15-pin high density D-sub vertical adapter for DL06 Port 2 serial communications port.	\$27.00
D2-FUSE-1	DL05 or DL06 F0-04TRS replacement fuse	\$12.00
ZL-CMA15	ZIPLink PLC communication adapter for 15-pin port	\$11.00
ZL-CMA15L	ZIPLink PLC communication adapter for 15-pin port with surge protection plus Power, Transmit, and Receive LED indicators	\$33.50



Discrete and analog option module terminal blocks
D0-ACC-4

DL05 option module slot cover, I/O terminal block, and I/O terminal block cover
D0-ACC-1

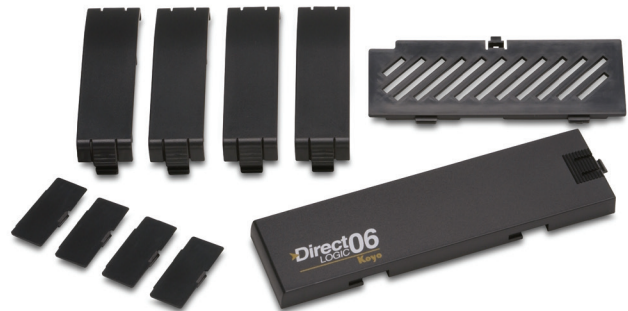


DL06 replacement option module slot covers, DL06 top covers, LCD slot cover, and lower access panel cover
D0-ACC-3

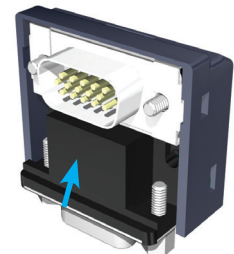
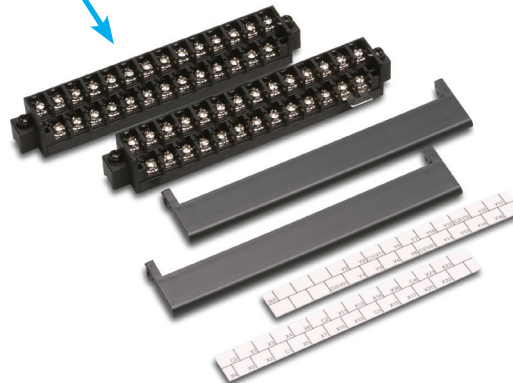


ZL-CMA15

DL06 replacement terminal blocks, terminal block covers, terminal block labels and short bar
D0-ACC-2



ZL-CMA15L



DL06 15-pin high density D-sub port adapter
D0-06ADPTR

See the Wiring Solutions section in this catalog for more information.